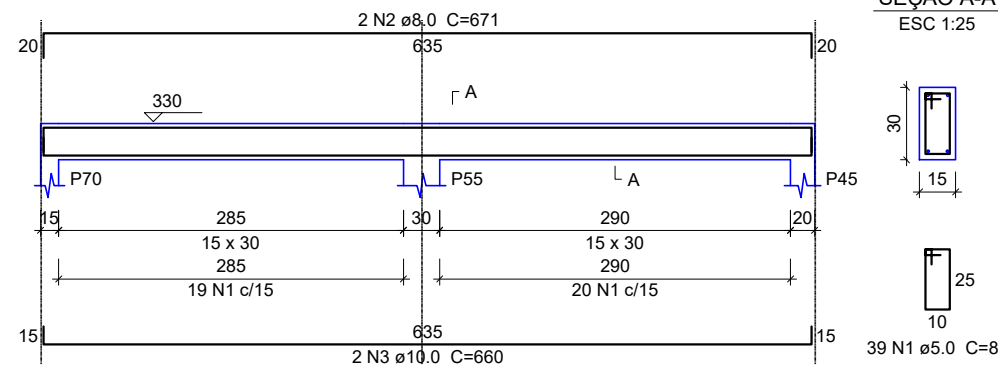


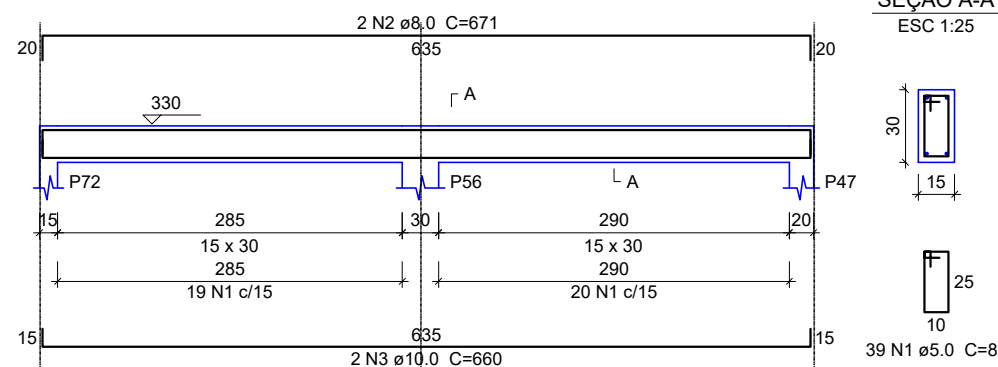
VC22

ESC 1:50



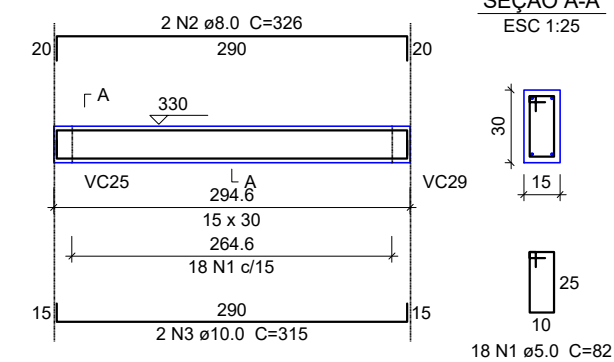
VC31

ESC 1:50



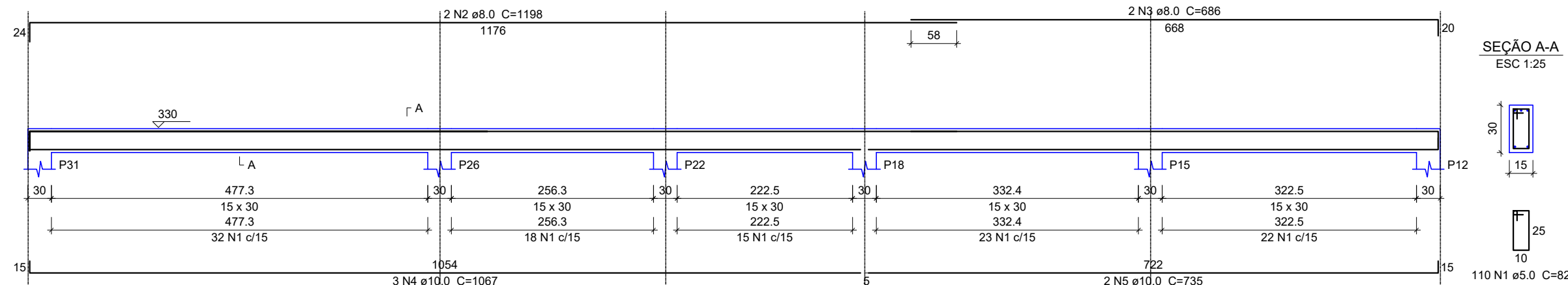
VC33

ESC 1:50



VC32

ESC 1:50



Relação do aço viga cobertura

ELEMENTO	AÇO	N	DIAM	Q	UNIT (cm)	C.TOTAL (cm)
VC1	CA60	1	5.0	75	82	6150
	CA50	2	8.0	2	1128	2256
	CA50	3	8.0	2	197	394
	CA50	4	10.0	2	828	1656
	CA50	5	10.0	2	418	836
VC2	CA60	1	5.0	50	82	4100
	CA50	2	8.0	2	874	1748
	CA50	3	10.0	2	858	1716
VC3	CA60	1	5.0	36	82	2952
	CA50	2	8.0	2	618	1236
	CA50	3	10.0	2	607	1214
VC4	CA60	1	5.0	26	82	2132
	CA50	2	8.0	2	468	936
	CA50	3	10.0	2	440	880
VC5	CA60	1	5.0	32	82	2624
	CA50	2	8.0	2	571	1142
	CA50	3	10.0	2	560	1120
VC6	CA60	1	5.0	33	82	2706
	CA50	2	8.0	2	571	1142
	CA50	3	10.0	2	560	1120
VC7	CA60	1	5.0	32	82	2624
	CA50	2	8.0	2	571	1142
	CA50	3	10.0	2	560	1120
VC8	CA60	1	5.0	311	82	25502
	CA50	2	8.0	2	1199	2398
	CA50	3	8.0	2	1200	2400
VC9	CA50	4	8.0	2	1014	2028
	CA50	5	10.0	2	833	1666
	CA50	6	10.0	4	815	3260
VC10	CA50	7	10.0	2	826	1652
	CA60	1	5.0	233	82	19106
	CA50	2	8.0	2	1198	2396
VC11	CA50	3	8.0	2	1200	2400
	CA50	4	8.0	2	199	398
	CA50	5	10.0	2	825	1650
VC12	CA50	6	10.0	2	815	1630
	CA50	7	10.0	2	833	1666
	CA60	1	5.0	205	82	16810
VC13	CA50	2	8.0	2	1198	2396
	CA50	3	8.0	2	1200	2400
	CA50	4	8.0	2	1019	2038
VC14	CA50	5	10.0	2	828	1656
	CA50	6	10.0	4	805	3220
	CA50	7	10.0	2	821	1642

ELEMENTO	AÇO	N	DIAM	Q	UNIT (cm)	C.TOTAL (cm)
VC11	CA60	1	5.0	153	82	12546
	CA50	2	8.0	2	1198	2396
	CA50	3	8.0	2	1200	2400
	CA50	4	8.0	2	207	414
	CA50	5	10.0	2	820	1640
VC12	CA50	6	10.0	2	805	1610
	CA50	7	10.0	2	828	1656
	CA60	1	5.0	39	82	3198
VC13	CA50	2	8.0	2	671	1342
	CA50	3	10.0	2	660	1320
	CA60	1	5.0	39	82	3198
VC14	CA50	2	8.0	2	671	1342
	CA50	3	10.0	2	660	1320
	CA60	1	5.0	39	82	3198
VC15	CA50	2	8.0	2	671	1342
	CA50	3	10.0	2	660	1320
	CA60	1	5.0	39	82	3198
VC16	CA50	2	8.0	2	671	1342
	CA50	3	10.0	2	660	1320
	CA60	1	5.0	39	82	3198
VC17	CA50	2	8.0	2	671	1342
	CA50	3	10.0	2	660	1320
	CA60	1	5.0	39	82	3198
VC18	CA50	2	8.0	2	671	1342
	CA50	3	10.0	2	660	1320
	CA60	1	5.0	39	82	3198
VC19	CA50	2	8.0	2	671	1342
	CA50	3	10.0	2	660	1320
	CA60	1	5.0	97	82	7954
VC20	CA50	2	8.0	2	1198	2396
	CA50	3	8.0	2	442	884
	CA50	4	10.0	2	867	1734
VC21	CA50	5	10.0	2	716	1432
	CA60	1	5.0	15	82	1230
	CA50	2	8.0	2	281	562
VC22	CA50	3	10.0	2	270	540
	CA60	1	5.0	38	82	3116
	CA50	2	8.0	2	661	1322
VC23	CA50	3	10.0	2	650	1300
	CA60	1	5.0	39	82	3198
	CA50	2	8.0	2	671	1342
VC24	CA50	3	10.0	2	660	1320
	CA60	1	5.0	39	82	3198
	CA50	2	8.0	2	661	1322
VC25	CA50	3	10.0	2	660	1320
	CA60	1	5.0	39	82	3198
	CA50	2	8.0	2	661	1322
VC26	CA50	3	10.0	2	660	1320
	CA60	1	5.0	39	82	3198
	CA50	2	8.0	2	661	1322
VC27	CA50	3	10.0	2	660	1320
	CA60	1	5.0	39	82	3198
	CA50	2	8.0	2	661	1322
VC28	CA50	3	10.0	2	660	1320
	CA60	1	5.0	39	82	3198
	CA50	2	8.0	2	661	1322
VC29	CA50	3	10.0	2	660	1320
	CA60	1	5.0	39	82	3198
	CA50	2	8.0	2	661	1322
VC30	CA50	3	10.0	2	660	1320
	CA60	1	5.0	39	82	3198
	CA50	2	8.0	2	661	1322
VC31	CA50	3	10.0	2	660	1320
	CA60	1	5.0	39	82	3198
	CA50	2	8.0	2	661	1322
VC32	CA50	3	10.0	2	660	1320
	CA60	1	5.0	110	82	9020
	CA50	2	8.0	2	1198	2396
VC33	CA50	3	8.0	2	686	1372
	CA50	4	10.0	3	1067	3201
	CA50	5	10.0	2	735	1470
VC34	CA60	1	5.0	18	82	1476
	CA50	2	8.0	2	326	652
	CA50	3	10.0	2	315	630

Resumo do aço total viga cobertura

AÇO	DIAM	C.TOTAL (m)	PESO (kg)
CA50	8.0	633.3	250
CA60	10.0	626.1	386
CA60	5.0	1655.5	255.2

PESO TOTAL
CA50 636
CA60 255.2

Vol. de concreto total (C-25) = 13.81 m³
Área de forma total = 222.37 m²

DIAGRAMA UNIFILAR DO QUADRO DE BOMBAS SEM ESCALA



PREFEITURA MUNICIPAL DE VÁRZEA GRANDE
Av. Castelo Branco, Espaço Municipal, 2500 - Centro Sul, Várzea Grande/MT
CEP 78125-700 - Fone/Fax: 65 3688 8000

LOCALIZAÇÃO: RUA SÃO PAULO (LOT. NOVA VÁRZEA GRANDE)
CEP: 78135-730 VÁRZEA GRANDE - MT

PROJETO: PROJETO ESTRUTURAL

OBRA: REFORMA E AMPLIAÇÃO DA EMEB JAIME VERÍSSIMO DE CAMPOS JUNIOR "JAIMINHO"

DATA: JULHO/2021

UNIDADE: METRO

AUTOR DO PROJETO: MATHEUS MARCANZONI LEITE
ENGENHEIRO CIVIL CREA - MT 042157

FOLHA Nº: 12/17